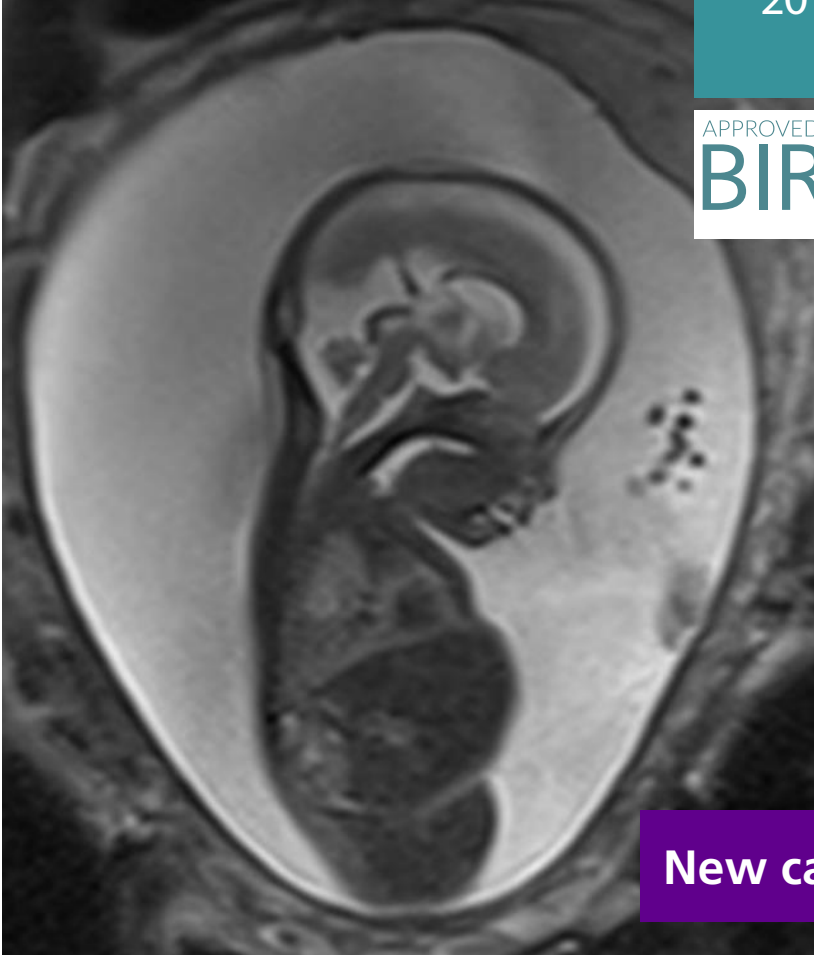


18
MAY
2018

APPROVED BY THE
BIR 



New cases

FETAL MRI INTERACTIVE WORKSHOP

Venue: Sheffield Hallam University

CPD: 5 CREDITS



Bayer have part
funded this event

PHILIPS

SIEMENS
Healthineers 

FETAL MRI INTERACTIVE WORKSHOP

Venue: Sheffield Hallam University

CPD: 5 CREDITS

This one day event will teach delegates all they need to know about the niche speciality of fetal MRI. The day will consist of three informative lectures combined with interactive OsiriX workstations, delivered by three leading Consultant Radiologists. Delegates will learn how to perform and obtain good quality images of the fetus using MRI and understand the basics of image interpretation and the likely pitfalls.

Educational aims:

- To provide delegates with the knowledge to perform fetal MRI
- To provide delegates with an interactive experience of interpretation of fetal MRI for the brain and the body
- To provide a forum for discussion of issues around fetal MRI and initiating a service

08:45	Registration and refreshments	15:00	Refreshments
09:00	Welcome and introduction	15:30	Part 2: The fetal body Renal and other body regions plus interactive workshop
09:15	Physics tips, tricks and how to get the best images – Lecture and interactive session on artefacts etc	16:45	Concluding remarks and networking updates
10:00	Part 1: Fetal MRI the CNS Introductory talk and interactive workshop	17:00	Close of event
11:15	Refreshments	Optional Extra: If delegates wish to only do fetal CNS cases there will be plenty of additional cases to work through independently in the afternoon with some of the faculty available for questions and discussion.	
11:45	Part 2: Fetal MRI the CNS Workshop		
13:00	Lunch		
14:00	Part 1: The fetal body Chest and interactive workshop		

This course provides 5 CPD credits in accordance with the CPD Scheme of the Royal College of Radiologists



Dr Elspeth Whitby, Consultant Radiologist, Royal Hallamshire Hospital

Dr Elspeth Whitby has been involved with fetal MRI since 1998. She currently runs a national service based in Sheffield and supports other centers to develop a local service as well as training radiologists.

Dr Sarah Fleming, Consultant Radiologist, Queen Elizabeth Hospital, King's Lynn

Dr Sarah Fleming specialized in women's imaging as a Specialty Registrar in Leeds and set up a fetal MRI service from scratch after securing a consultant post in Peterborough and latterly King's Lynn to complement her obstetric ultrasound service.



Dr Ashok Raghavan, Consultant Paediatric Radiologist, Sheffield Children's Hospitals

Dr Ashok Raghavan is a consultant Pediatric Radiologist with experience in both fetal US and more recently fetal MRI. He is based at Sheffield Children's Hospitals and is part of the Sheffield fetal MRI service.

Mr Andrew Fry, Principal MR Physicist, Sheffield Teaching Hospital NHS Foundation Trust

Registration Fees

Non member	£420
BIR Member Plan 1	£320
BIR Member Plan 2	£295
BIR Trainee member	£275
BIR Retired/Student member	£220

Join us

Join the BIR today to benefit from reduced delegate rates for our events.

For membership information visit:
www.bir.org.uk/join-us

FETAL MRI INTERACTIVE WORKSHOP

Venue: Sheffield Hallam University

Charles Street Building, Sheffield
Hallam University, City Campus,
Howard Street, Sheffield, S1 1WB



BY TRAIN

Regular inter-city services operate between Sheffield and other main line towns and cities. London is two-and-a-half hours away by train, Manchester, Leeds and Birmingham one hour and Edinburgh four hours. Sheffield's Train Station is just a two minute walk away from the City Campus via the Sheffield Station Bridge.

BY BUS

The city campus is located right next to Sheffield's bus and tram transport interchange, which is where Sheffield's National coach service for long distance travel operates from.

BY CAR

Sheffield's motorway link is the M1, junctions 33 and 34. You are recommended to leave at junction 33 and proceed into the city centre by way of the Parkway (A630)

PARKING

The NCP car park on Arundel Gate is just next door to City Campus, and visitors can claim a discount rate of £4 on weekdays. The ACPOA car park on Eyre Street is a five-minute walk away and the discounted parking cost is £3.50. To claim this discounted rate scan the yellow parking chip at the main reception in Owen Building at City Campus.