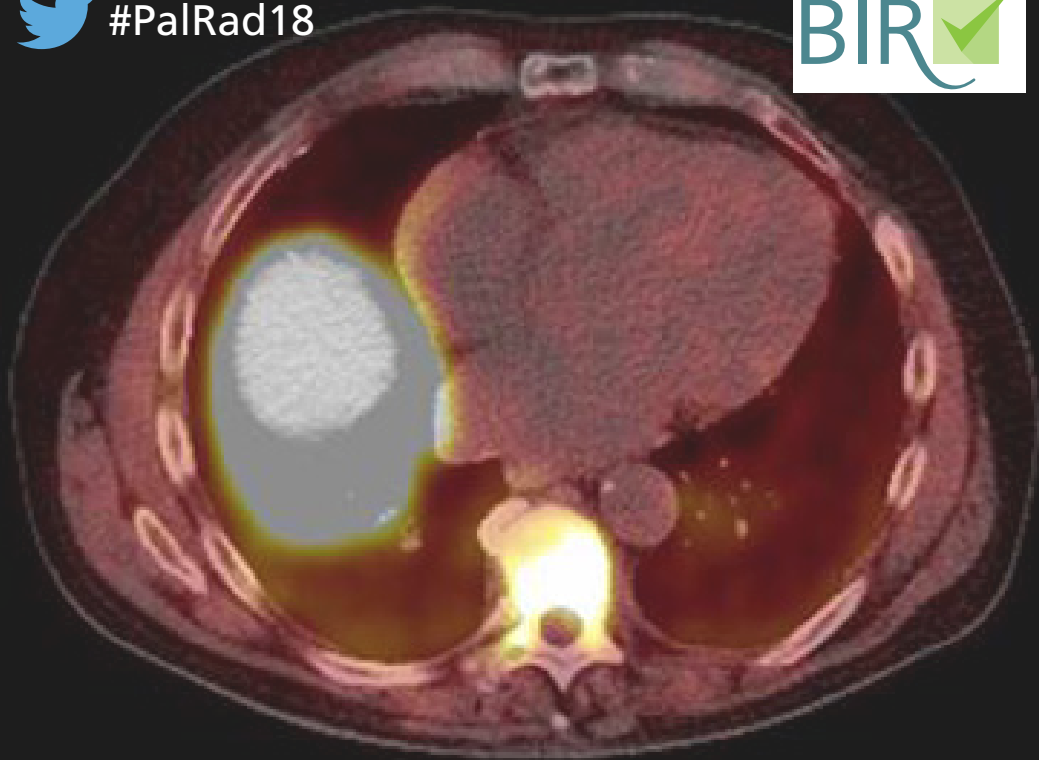




#PalRad18



PALLIATIVE RADIOTHERAPY

Venue: etc. venues Manchester

CPD: 6 CREDITS

Platinum sponsors



Bayer have part
funded this event

PHILIPS
SIEMENS
Healthineers



PTVW
OIS
Oncology Imaging Systems

PALLIATIVE RADIOTHERAPY

Venue: etc. venues Manchester

CPD: 6 CREDITS

Palliative radiotherapy is used to relieve our patients of pain or other distressing symptoms of their cancer and to improve their quality of life.

It has traditionally been associated with the use of simple planning and delivery techniques but there is now increasing interest in the use of the latest treatment techniques such as intensity-modulated radiation therapy (IMRT) and stereotactic ablative radiotherapy (SABR) to provide more effective and durable control and reduce toxicity. Alongside these developments, there has also been a change to a more multidisciplinary approach in the management of palliative cancer care with consultant therapeutic radiographers and nurses taking an increasingly active role in the planning of palliative radiotherapy.

08:30	Registration and refreshments	11:15	Can the consultant radiographer safely prescribe radiotherapy and improve service efficiency? Ms Karen Moore, Consultant Therapy Radiographer, Beatson West of Scotland Cancer Centre
09:00	Welcome and introduction	12:00	An audit of palliative radiotherapy practice for bone metastasis at our institution; Dose, fractionation and treatment technique Ms Rebecca Bamford, Junior Clinical Fellow, Royal Free NHS Foundation Trust
09:15	Advanced radiotherapy techniques in the palliative context Dr Luis Aznar-Garcia, Consultant Clinical Oncologist, Nottingham University Hospitals NHS Trust	12:15	Peer review of palliative radiotherapy by a multi-disciplinary team Ms Linda Bedford, Macmillan Consultant Radiographer, Musgrove Park Hospital
10:00	Is HyperArc™ the answer to more than SRS? Ms Dianne Kearnes, Planning Services Manager, Beatson West of Scotland Cancer Centre	12:30	Defining spinal instability – informing the MSCI pathway Ms Helen Gregory, Macmillan Consultant Radiographer in Palliative Oncology, North West Anglia NHS Foundation Trust
10:15	Conformity indices for Stereotactic Radiosurgery (SRS) Planning Target Volumes (PTV) smaller than 1cc Miss Anna Bangiri, Lead SRS Radiotherapy Physicist, Nottingham University Hospitals NHS Trust	12:45	Lunch
10:30	Two dimensional radiotherapy to IMRT, is it possible? Ms Sarah Wilkinson, Senior Radiographer, NHS Greater Glasgow and Clyde		
10:45	Refreshments		

This course provides 6 CPD credits in accordance with the CPD Scheme of the Royal College of Radiologists

21
MARCH
2018

- 13:45** **Rapid access palliative radiotherapy clinic – The Christie experience**
Dr Agata Rembielak, Consultant Clinical Oncologist, The Christie NHS Foundation Trust
- 14:30** **Implementation of a palliative radiotherapy clinic: Audit results**
Ms Marie Pagett, Radiotherapy Lecturer, University of Liverpool
- 14:45** **Does the implementation of a rapid access palliative clinic provide prompt radiotherapy treatment and a high-quality experience within the department for patients?**
Ms Rachael Bennett, Clinical Education Superintendent, The Christie NHS Foundation Trust
- 15:00** **Evaluation of the radiotherapy pathway for metastatic spinal cord compression patients**
Mr Conor Fitzpatrick, Consultant Radiographer in Palliative Radiotherapy, The Clatterbridge Cancer Centre NHS Foundation Trust
- 15:15** **Refreshments**
- 15:45** **Evaluation of an informed consent in radiotherapy unit: Doctors patients' perspective**
Dr Qurrat-ul-ain Tahir, Core Medical Trainee Year 2, Colchester Hospital University NHS Foundation Trust
- 16:00** **Panel discussion and questions**
- 16:45** **Close of event**

Registration Fees

Non member	£275
BIR Member Plan 1	£165
BIR Member Plan 2	£125
BIR Trainee member	£75
BIR Retired/Student member	£65

Join us

Join the BIR today to benefit from reduced delegate rates for our events.

For membership information visit:
www.bir.org.uk/join-us

Venue: etc. venues Manchester

11 Portland Street
Manchester M1 3HU



BY TRAIN

Manchester Piccadilly station is approximately a 5mins walk from the venue.
Manchester Oxford Road station is approximately 8mins walk.
Manchester Victoria station is approximately 15mins walk from the venue.

BY BUS AND TRAM

Piccadilly Gardens is the main transport hub for trams and buses and is a 2mins walk from the venue.

CAR PARKING

There is a pay and display NCP car park on Major Street directly behind the venue). Follow for directions to NCP Major Street. Car parking for up to 9 hours is £12.00 or for 24 hours is £15.50. Address is Major Street, Manchester, M1 3ED.



@BIR_News



[/britishinstituteofradiology](http://britishinstituteofradiology)



The British Institute of Radiology

48–50 St John Street, London, EC1M 4DG
www.bir.org.uk

Registered charity number: 215869

