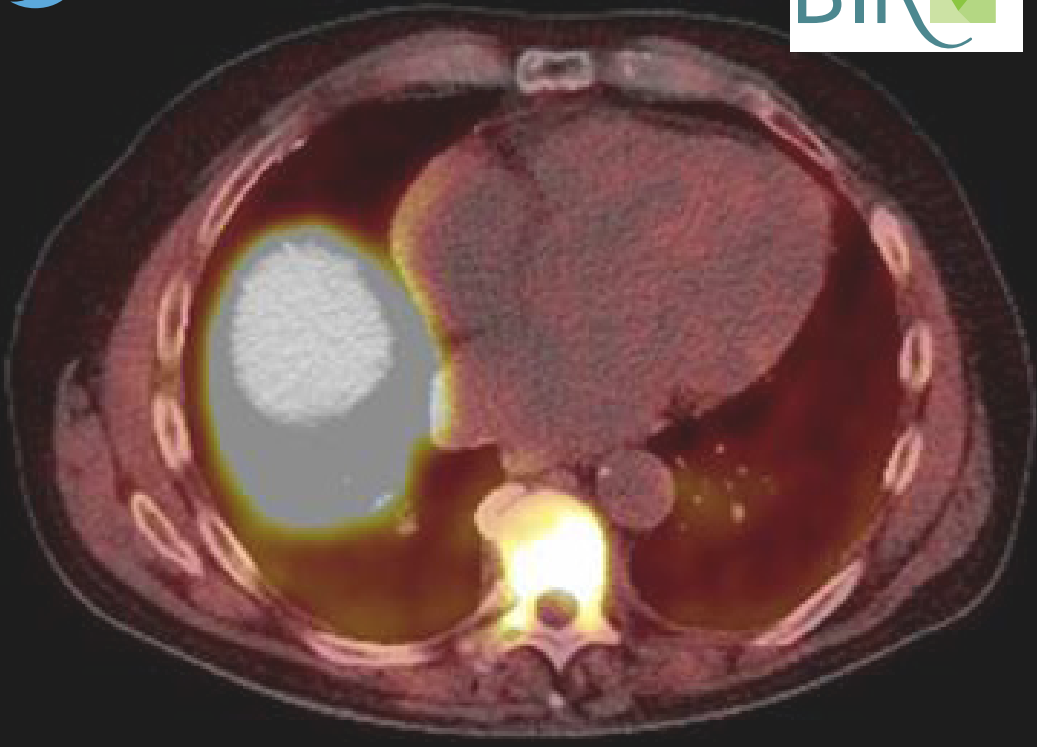
 #PaIRT17

APPROVED BY THE
BIR 



PALLIATIVE RADIOTHERAPY
Venue: Courthouse Hotel Shoreditch, London
CPD: 6 CREDITS

Platinum sponsors

PHILIPS
SIEMENS
Healthineers



Bayer have part
funded this event

iei
imagingequipmentLtd

OIS
Oncology Imaging Systems

OSL
ONCOLOGY SYSTEMS LIMITED

PALLIATIVE RADIOTHERAPY

Venue: Courthouse Hotel Shoreditch, London

CPD: 6 CREDITS

Palliative radiotherapy is used to relieve our patients of pain or other distressing symptoms of their cancer and to improve their quality of life.

It has traditionally been associated with the use of simple planning and delivery techniques but there is now increasing interest in the use of the latest treatment techniques such as intensity-modulated radiation therapy (IMRT) and stereotactic ablative radiotherapy (SABR) to provide more effective and durable control and reduce toxicity. Alongside these developments, there has also been a change to a more multidisciplinary approach in the management of palliative cancer care with consultant therapeutic radiographers and nurses taking an increasingly active role in the planning of palliative radiotherapy.

08:30	Registration and refreshments	11:00	Clinical implementation of a simple method for in-vivo EPID transit dosimetry for palliative radiotherapy
09:00	Welcome and introduction		
	Session 1: Advanced radiotherapy techniques for palliation		Session 2: Ablative radiotherapy for palliation
09:15	The rationale for more than palliation in palliation Dr Vincent Khoo, Consultant Clinical Oncologist, The Royal Marsden NHS Foundation Trust	11:15	Refreshments
10:00	6-Year experience of CT radiotherapy planning for all palliative patients in Peterborough	11:45	Use of SABR in a palliative context Dr Veni Ezhil, Consultant Clinical Oncologist, Royal Surrey County Hospital
10:15	Rapid access VMAT/IMRT for palliative radiotherapy: concept, implementation and reflection	12:30	SABR CTE scheme at the Nottingham Cancer Centre
10:30	Better, quicker, safer – streamlined VMAT palliative radiotherapy at Newcastle's Northern Centre for Cancer Care	12:45	Use of SBRT in the oligometastatic setting
10:45	The use of VMAT for palliative head and neck cancer radiotherapy	13:00	Implementing a new stereotactic radiosurgery (SRS) service for brain metastases: the Nottingham University Hospitals NHS Trust experience so far
		13:15	Lunch

This course provides 6 CPD credits in accordance with the CPD Scheme of the Royal College of Radiologists

24
MARCH
2017

Session 3: Integration of radiotherapy with the oncology and palliative medicine service

14:15	Can the consultant radiographer safely prescribe radiotherapy and improve service efficiency? Karen Moore, Consultant Therapy Radiographer, Beatson Oncology Centre
15:00	Benchmarking 90-day mortality and 1-year survival for complex multi-fraction palliative radiotherapy
15:15	Palliative thoracic radiotherapy – a single centre audit of outcomes
15:30	Refreshments
16:00	Successful pain relief after a short course of palliative radiotherapy in painful pancreatic cancer
16:15	The Manchester and Cheshire Metastatic Spinal Cord Compression (MSCC) Service
16:30	The impact of a consultant radiographer on stereotactic radiotherapy service
16:45	Panel discussion and questions
17:00	Close of event

Registration Fees

Non member	£250
BIR Member Plan 1	£145
BIR Member Plan 2	£110
BIR Trainee member	£65
BIR Retired/Student member	£55

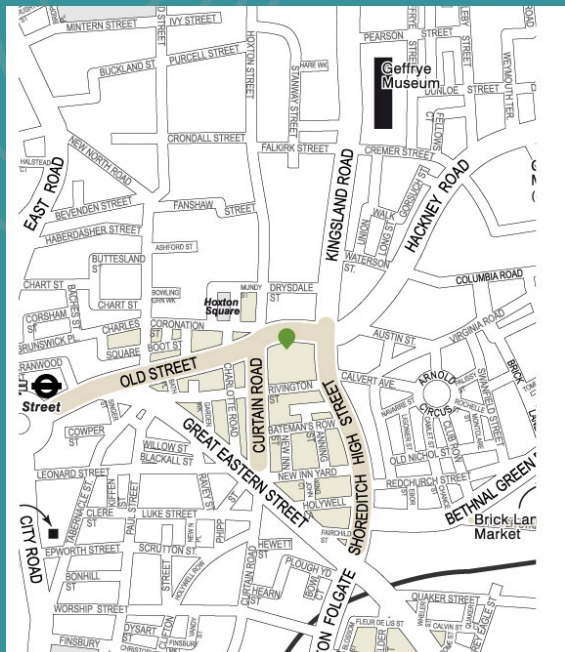
Join us

Join the BIR today to benefit from reduced delegate rates for our events.

For membership information visit:
www.bir.org.uk/join-us

PALLIATIVE RADIOTHERAPY

Venue: Courthouse Hotel Shoreditch, London



335-337 Old Street
London EC1V 9LL

BY LONDON UNDERGROUND:

Old Street tube station is 7 mins walk away from the venue which is served by the Northern Line.

Liverpool Street tube station is 14 mins walk away and is served by the Central, Hammersmith & City, Metropolitan and Circle Line.

Moorgate station is 14 mins walk away and is served by the Northern Line.

BY TRAIN

Old Street and Liverpool Street railway stations are the closest main line stations to the venue.

BY BUS

Nearest bus routes: 48, 55, 141, 242 and 243 are all within walking distance to the venue.

BIR
The British
Institute of
Radiology

 @BIR_News

 /britishinstituteofradiology

 The British Institute of Radiology

48–50 St John Street, London, EC1M 4DG
www.bir.org.uk

Registered charity number: 215869

