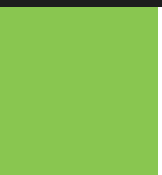
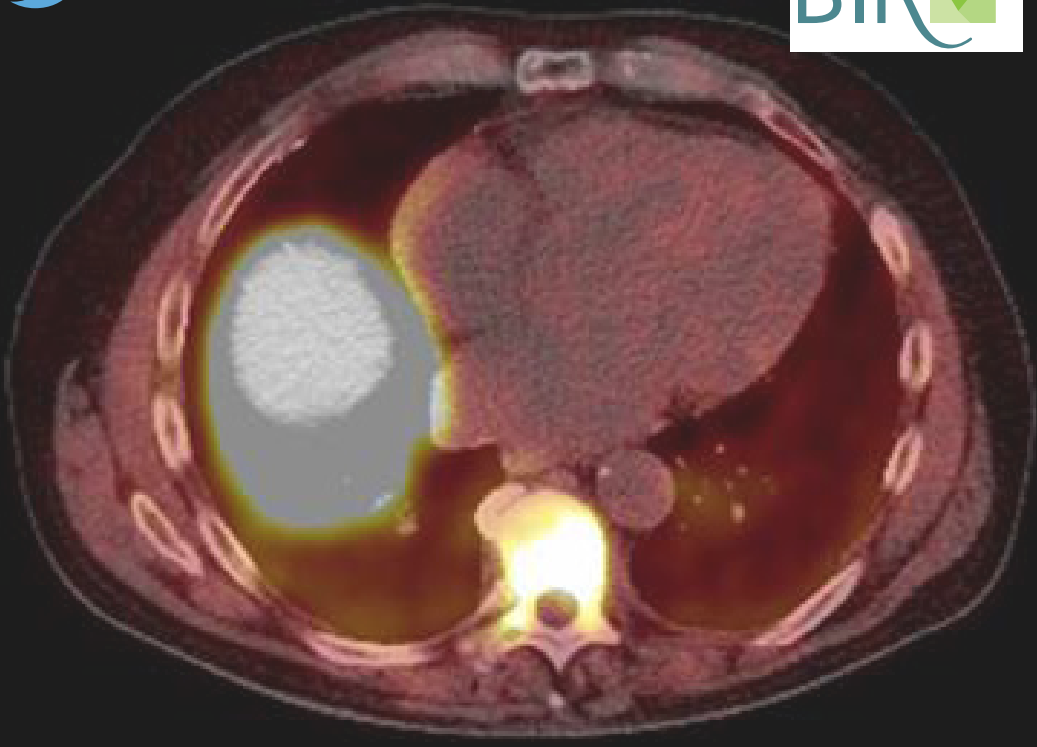


 #PaIRT17

APPROVED BY THE  
**BIR** 



**PALLIATIVE RADIOTHERAPY**  
Venue: Courthouse Hotel Shoreditch, London  
CPD: 6 CREDITS

Platinum sponsors

**PHILIPS**  
**SIEMENS**  
**Healthineers**



Bayer have part  
funded this event

**iei**  
imagingequipmentLtd

**OIS**  
Oncology Imaging Systems

**OSL**  
ONCOLOGY SYSTEMS LIMITED

# PALLIATIVE RADIOTHERAPY

Venue: Courthouse Hotel Shoreditch, London

CPD: 6 CREDITS

Palliative radiotherapy is used to relieve our patients of pain or other distressing symptoms of their cancer and to improve their quality of life.

It has traditionally been associated with the use of simple planning and delivery techniques but there is now increasing interest in the use of the latest treatment techniques such as intensity-modulated radiation therapy (IMRT) and stereotactic ablative radiotherapy (SABR) to provide more effective and durable control and reduce toxicity. Alongside these developments, there has also been a change to a more multidisciplinary approach in the management of palliative cancer care with consultant therapeutic radiographers and nurses taking an increasingly active role in the planning of palliative radiotherapy.

08:30	Registration and refreshments	11:00	Clinical implementation of a simple method for in-vivo EPID transit dosimetry for palliative radiotherapy
09:00	Welcome and introduction		
	<b>Session 1: Advanced radiotherapy techniques for palliation</b>		<b>Session 2: Ablative radiotherapy for palliation</b>
09:15	<b>The rationale for more than palliation in palliation</b> Dr Vincent Khoo, Consultant Clinical Oncologist, The Royal Marsden NHS Foundation Trust	11:15	Refreshments
10:00	<b>6-Year experience of CT radiotherapy planning for all palliative patients in Peterborough</b>	11:45	<b>Use of SABR in a palliative context</b> Dr Veni Ezhil, Consultant Clinical Oncologist, Royal Surrey County Hospital
10:15	<b>Rapid access VMAT/IMRT for palliative radiotherapy: concept, implementation and reflection</b>	12:30	<b>SABR CTE scheme at the Nottingham Cancer Centre</b>
10:30	<b>Better, quicker, safer – streamlined VMAT palliative radiotherapy at Newcastle's Northern Centre for Cancer Care</b>	12:45	<b>Use of SBRT in the oligometastatic setting</b>
10:45	<b>The use of VMAT for palliative head and neck cancer radiotherapy</b>	13:00	<b>Implementing a new stereotactic radiosurgery (SRS) service for brain metastases: the Nottingham University Hospitals NHS Trust experience so far</b>
		13:15	Lunch

This course provides 6 CPD credits in accordance with the CPD Scheme of the Royal College of Radiologists

24  
MARCH  
2017

**Session 3: Integration of radiotherapy with the oncology and palliative medicine service**

14:15	<b>Can the consultant radiographer safely prescribe radiotherapy and improve service efficiency?</b> Karen Moore, Consultant Therapy Radiographer, Beatson Oncology Centre
15:00	<b>Benchmarking 90-day mortality and 1-year survival for complex multi-fraction palliative radiotherapy</b>
15:15	<b>Palliative thoracic radiotherapy – a single centre audit of outcomes</b>
15:30	<b>Refreshments</b>
16:00	<b>Successful pain relief after a short course of palliative radiotherapy in painful pancreatic cancer</b>
16:15	<b>The Manchester and Cheshire Metastatic Spinal Cord Compression (MSCC) Service</b>
16:30	<b>The impact of a consultant radiographer on stereotactic radiotherapy service</b>
16:45	<b>Panel discussion and questions</b>
17:00	<b>Close of event</b>

## Registration Fees

Non member	£250
BIR Member Plan 1	£145
BIR Member Plan 2	£110
BIR Trainee member	£65
BIR Retired/Student member	£55

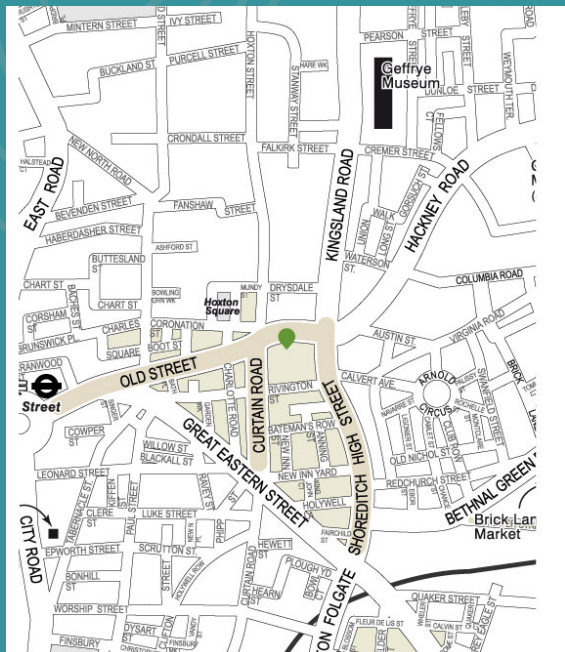
## Join us

Join the BIR today to benefit from reduced delegate rates for our events.

For membership information visit:  
[www.bir.org.uk/join-us](http://www.bir.org.uk/join-us)

# PALLIATIVE RADIOTHERAPY

Venue: Courthouse Hotel Shoreditch, London



335-337 Old Street  
London EC1V 9LL

#### BY LONDON UNDERGROUND:

Old Street tube station is 7 mins walk away from the venue which is served by the Northern Line.

Liverpool Street tube station is 14 mins walk away and is served by the Central, Hammersmith & City, Metropolitan and Circle Line.

Moorgate station is 14 mins walk away and is served by the Northern Line.

#### BY TRAIN

Old Street and Liverpool Street railway stations are the closest main line stations to the venue.

#### BY BUS

Nearest bus routes: 48, 55, 141, 242 and 243 are all within walking distance to the venue.

**BIR**  
The British  
Institute of  
Radiology

 @BIR\_News

 /britishinstituteofradiology

 The British Institute of Radiology

48–50 St John Street, London, EC1M 4DG  
www.bir.org.uk

Registered charity number: 215869

